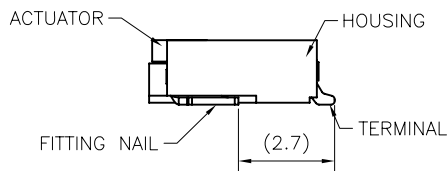
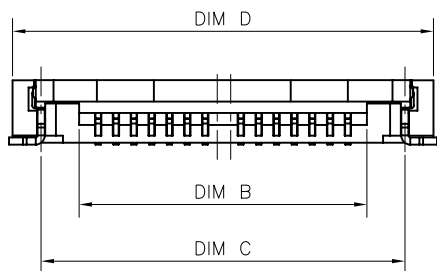
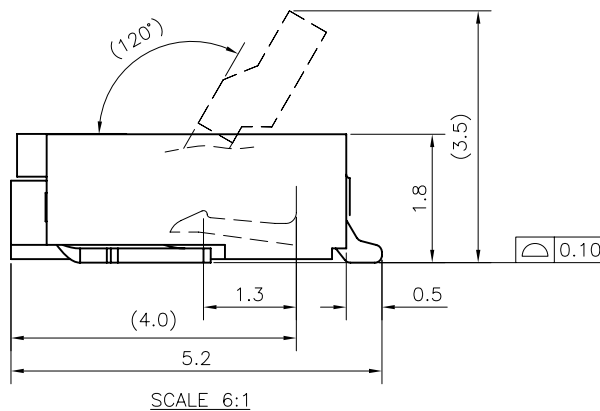
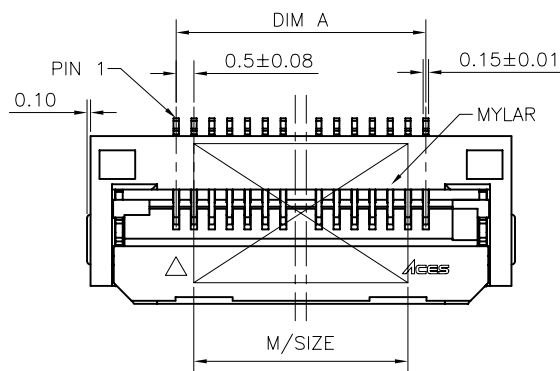




A | B | C | D | E | F



NOTES:

1. MATERIAL:
  - 1.1 HOUSING: THERMOPLASTIC, HIGH TEMP., UL94V-0.
  - 1.2 ACTUATOR: THERMOPLASTIC, HIGH TEMP., UL94V-0.
  - 1.3 CONTACT: COPPER ALLOY
  - 1.4 FITTING NAIL: COPPER ALLOY
2. FINISH:
  - 2.1 CONTACT: GOLD FLASH PLATING. 50~100u" NICKEL UNDERPLATING OVERALL.
  - 2.2 FITTING NAIL: 100~200u" MATT TIN PLATING ON SOLDER TAILS(LEAD FREE). 50~100u" NICKEL UNDERPLATING OVERALL.
3. REFLOW SOLDER CAPABLE TO 260°C PER ACES SPEC.
4. SPEC. PLS. REFER TO PS-51555-XXXXX-XXX
5. PACKAGE PLS. REFER TO 51555-XXXXX-TRP

6. PART NUMBER

51555-XXX X X-XXX

NO OF CKT

| XXX | HOUSING MATERIAL&COLOR | ACTUATOR MATERIAL&COLOR |
|-----|------------------------|-------------------------|
| 001 | HF & NATURAL           | HF & BLACK              |

PLATING

1: G/F PLATING(LEAD FREE)

PACKING

- 0: TAPE & REEL
- 1: TUBE
- 4: TAPE & REEL WITH MYLAR
- 5: TUBE WITH MYLAR

1

2

3

4

5

1

2

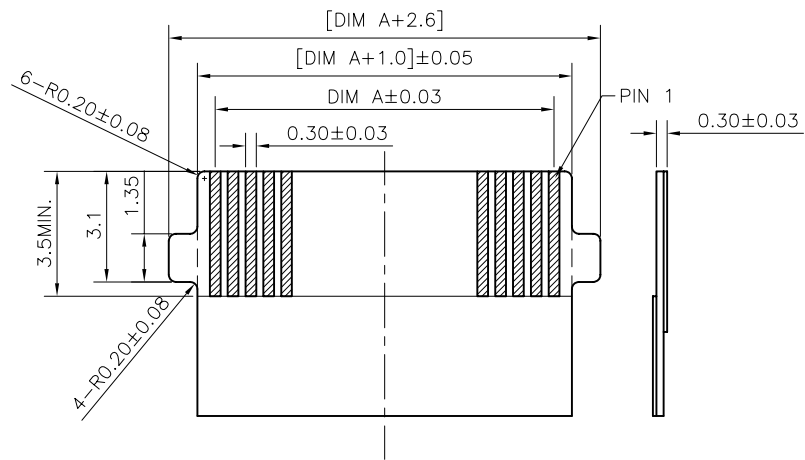
3

4

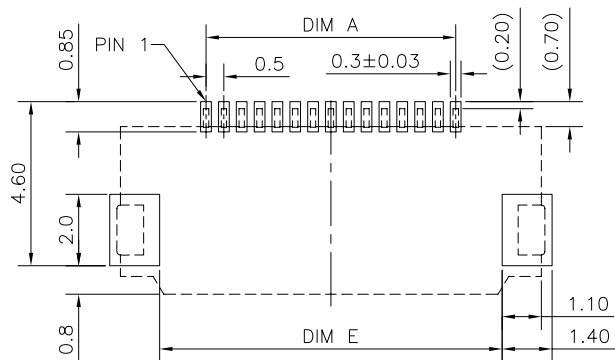
5

A | B | C | D | E | F

|  |  |   |
|--|--|---|
| 一般公差<br><b>TOLERANCES</b><br>X ±0.5 .XX ±0.15<br>X ±0.25 .XXX ±0.1<br>ANGLES ±2°                                 | <b>宏致電子股份有限公司</b><br><b>Aces Electronics Co.,Ltd.</b>            |   |
| 檢驗尺寸標示<br><b>SYMBOLS</b> <b>INDICATE CLASSIFICATION DIMENSION</b><br>MARK IS CRITICAL DIM.<br>MARK IS MAJOR DIM. | <b>品名 (TITLE)</b><br>0.5 PITCH EASY ON FPC<br>Conn. H=1.8mm TYPE | <b>製圖 (DR)</b><br>13/03/28 CANDY<br><b>審核 (CHKD)</b><br>SAM |
|  | <b>圖號 (DWG NO.)</b><br>51555-XXXXX-XXX                           | <b>核准 (APPD)</b><br>JASON                                   |
| <b>表面處理 (FINISH)</b><br>_____  | <b>比例 (SCALE)</b><br>1:1   | <b>單位 (UNITS)</b><br>mm                                     |
|  |  | <b>張數 (SHEET)</b><br>1 OF 2                                 |
|  |  | <b>SIZE</b><br>A4   |
|  |  | <b>REV</b><br>A   |



RECOMMENDED FPC/FFC DIMENSIONS  
GENERAL TOLERANCE ±0.1



RECOMMENDED PCB LAYOUT  
GENERAL TOLERANCE ±0.05

| CKT | DIMA | DIMB  | DIMC | DIMD | DIME | M/SIZE | CKT | DIMA | DIMB  | DIMC | DIMD | DIME | M/SIZE |
|-----|------|-------|------|------|------|--------|-----|------|-------|------|------|------|--------|
| 4   | 1.5  | 2.57  | 4.7  | 6.3  | 4.1  | 6.0    | 33  | 16.0 | 17.07 | 19.2 | 20.8 | 18.6 | 10.0   |
| 5   | 2.0  | 3.07  | 5.2  | 6.8  | 4.6  | 6.0    | 34  | 16.5 | 17.57 | 19.7 | 21.3 | 19.1 | 10.0   |
| 6   | 2.5  | 3.57  | 5.7  | 7.3  | 5.1  | 6.0    | 35  | 17.0 | 18.07 | 20.2 | 21.8 | 19.6 | 10.0   |
| 7   | 3.0  | 4.07  | 6.2  | 7.8  | 5.6  | 6.0    | 36  | 17.5 | 18.57 | 20.7 | 22.3 | 20.1 | 10.0   |
| 8   | 3.5  | 4.57  | 6.7  | 8.3  | 6.1  | 6.0    | 37  | 18.0 | 19.07 | 21.2 | 22.8 | 20.6 | 10.0   |
| 9   | 4.0  | 5.07  | 7.2  | 8.8  | 6.6  | 6.0    | 38  | 18.5 | 19.57 | 21.7 | 23.3 | 21.1 | 10.0   |
| 10  | 4.5  | 5.57  | 7.7  | 9.3  | 7.1  | 6.0    | 39  | 19.0 | 20.07 | 22.2 | 23.8 | 21.6 | 10.0   |
| 11  | 5.0  | 6.07  | 8.2  | 9.8  | 7.6  | 6.0    | 40  | 19.5 | 20.57 | 22.7 | 24.3 | 22.1 | 10.0   |
| 12  | 5.5  | 6.57  | 8.7  | 10.3 | 8.1  | 6.0    | 41  | 20.0 | 21.07 | 23.2 | 24.8 | 22.6 | 10.0   |
| 13  | 6.0  | 7.07  | 9.2  | 10.8 | 8.6  | 6.0    | 42  | 20.5 | 21.57 | 23.7 | 25.3 | 23.1 | 10.0   |
| 14  | 6.5  | 7.57  | 9.7  | 11.3 | 9.1  | 6.0    | 43  | 21.0 | 22.07 | 24.2 | 25.8 | 23.6 | 10.0   |
| 15  | 7.0  | 8.07  | 10.2 | 11.8 | 9.6  | 6.0    | 44  | 21.5 | 22.57 | 24.7 | 26.3 | 24.1 | 10.0   |
| 16  | 7.5  | 8.57  | 10.7 | 12.3 | 10.1 | 6.0    | 45  | 22.0 | 23.07 | 25.2 | 26.8 | 24.6 | 10.0   |
| 17  | 8.0  | 9.07  | 11.2 | 12.8 | 10.6 | 6.0    | 46  | 22.5 | 23.57 | 25.7 | 27.3 | 25.1 | 10.0   |
| 18  | 8.5  | 9.57  | 11.7 | 13.3 | 11.1 | 6.0    | 47  | 23.0 | 24.07 | 26.2 | 27.8 | 25.6 | 10.0   |
| 19  | 9.0  | 10.07 | 12.2 | 13.8 | 11.6 | 6.0    | 48  | 23.5 | 24.57 | 26.7 | 28.3 | 26.1 | 10.0   |
| 20  | 9.5  | 10.57 | 12.7 | 14.3 | 12.1 | 6.0    | 49  | 24.0 | 25.07 | 27.2 | 28.8 | 26.6 | 10.0   |
| 21  | 10.0 | 11.07 | 13.2 | 14.8 | 12.6 | 6.0    | 50  | 24.5 | 25.57 | 27.7 | 29.3 | 27.1 | 10.0   |
| 22  | 10.5 | 11.57 | 13.7 | 15.3 | 13.1 | 6.0    | 51  | 25.0 | 26.07 | 28.2 | 29.8 | 27.6 | 10.0   |
| 23  | 11.0 | 12.07 | 14.2 | 15.8 | 13.6 | 6.0    | 52  | 25.5 | 26.57 | 28.7 | 30.3 | 28.1 | 10.0   |
| 24  | 11.5 | 12.57 | 14.7 | 16.3 | 14.1 | 6.0    | 53  | 26.0 | 27.07 | 29.2 | 30.8 | 28.6 | 10.0   |
| 25  | 12.0 | 13.07 | 15.2 | 16.8 | 14.6 | 6.0    | 54  | 26.5 | 27.57 | 29.7 | 31.3 | 29.1 | 10.0   |
| 26  | 12.5 | 13.57 | 15.7 | 17.3 | 15.1 | 6.0    | 55  | 27.0 | 28.07 | 30.2 | 31.8 | 29.6 | 10.0   |
| 27  | 13.0 | 14.07 | 16.2 | 17.8 | 15.6 | 6.0    | 56  | 27.5 | 28.57 | 30.7 | 32.3 | 30.1 | 10.0   |
| 28  | 13.5 | 14.57 | 16.7 | 18.3 | 16.1 | 6.0    | 57  | 28.0 | 29.07 | 31.2 | 32.8 | 30.6 | 10.0   |
| 29  | 14.0 | 15.07 | 17.2 | 18.8 | 16.6 | 6.0    | 58  | 28.5 | 29.57 | 31.7 | 33.3 | 31.1 | 10.0   |
| 30  | 14.5 | 15.57 | 17.7 | 19.3 | 17.1 | 6.0    | 59  | 29.0 | 30.07 | 32.2 | 33.8 | 31.6 | 10.0   |
| 31  | 15.0 | 16.07 | 18.2 | 19.8 | 17.6 | 10.0   | 60  | 29.5 | 30.57 | 32.7 | 34.3 | 32.1 | 10.0   |
| 32  | 15.5 | 16.57 | 18.7 | 20.3 | 18.1 | 10.0   |     |      |       |      |      |      |        |

|   |   |  |  |                    |                      |
|---|---|--|--|--------------------|----------------------|
| 一般公差<br>TOLERANCES<br>X ±0.5 .XX ±0.15<br>X ±0.25 .XXX ±0.1<br>ANGLES ±2° |   | <b>宏致電子股份有限公司</b><br>Aces Electronics Co.,Ltd. |  |                    |                      |
| 檢驗尺寸標示<br>SYMBOLS  INDICATE<br>CLASSIFICATION DIMENSION                   | 品名 (TITLE)<br>0.5 PITCH EASY ON FPC<br>Conn. H=1.8mm TYPE | 製圖 (DR)<br>13/03/28 CANDY                      |  |                    |                      |
| MARK IS CRITICAL DIM.<br>MARK IS MAJOR DIM.                               | 圖號 (DWG.NO)<br>51555-XXXXX-XXX                            | 審核 (CHKD)<br>Sam                               |  |                    |                      |
| 表面處理 (FINISH)   | 比例 (SCALE)<br>1:1   | 單位 (UNITS)<br>mm                               |  | 核准 (APPD)<br>JASON | 張數 (SHEET)<br>2 OF 2 |
|   |   |  |  | 尺寸 (SIZE)<br>A4    | 版本 (REV)<br>A        |